

*Mike*  
**Dobson**



**20 Severn Drive**  
Garforth, Leeds, LS25 2BB

**£285,000**



# 20 Severn Drive

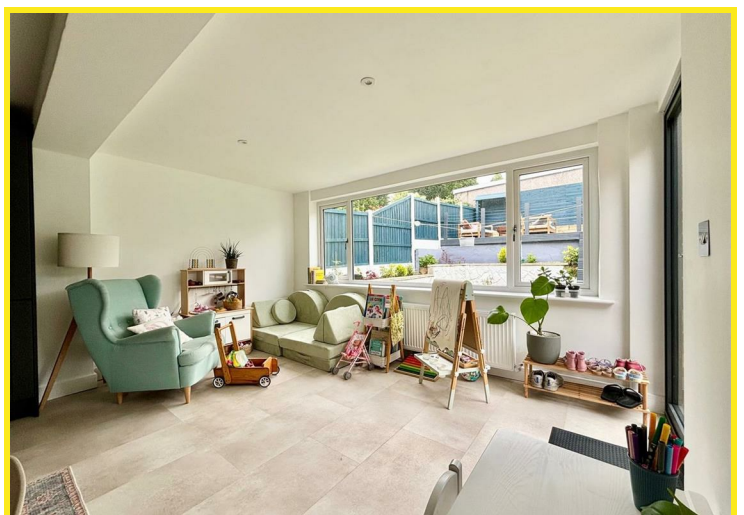
Situated on the ever popular Severn Drive of Garforth, Leeds, this semi-detached house is a true gem waiting to be discovered. Boasting 2 reception rooms and 3 cosy bedrooms, as well as a spacious kitchen/dining room and modern bathroom, this property offers ample space for comfortable living and is beautifully presented throughout.

The house features a modern fitted kitchen complete with solid wood units to high and low levels, a five-ring gas hob and electric oven, perfect for whipping up delicious meals for family and friends. The rear extension has transformed the space into an open plan area, ideal for creating a seamless flow between the kitchen, dining, and play areas.

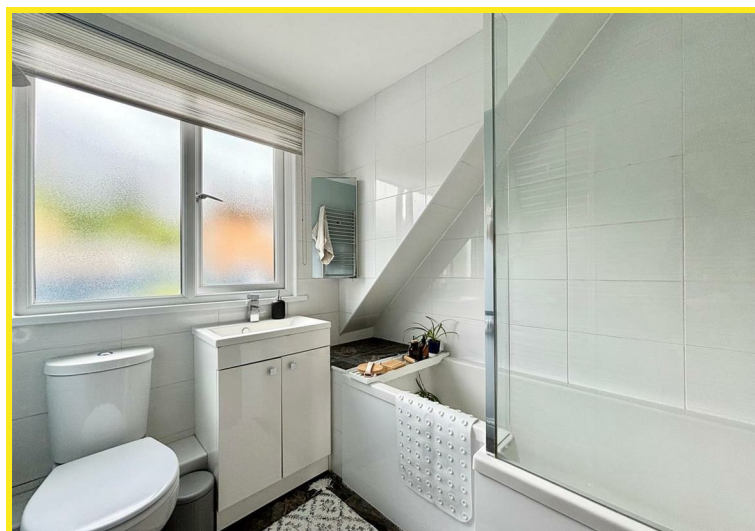
Imagine chilly evenings gathered around the inviting log burner in the lounge, creating a warm and homely atmosphere. The modern three-piece white bathroom suite adds a touch of elegance to the home, providing a tranquil space to unwind after a long day.

Convenience is key with a garage and off-road parking to the front of the property. Whether you're hosting a gathering or simply enjoying a quiet evening in, this house offers the perfect setting for every occasion.

Don't miss out on the opportunity to make this house your home sweet home in the heart of Garforth.

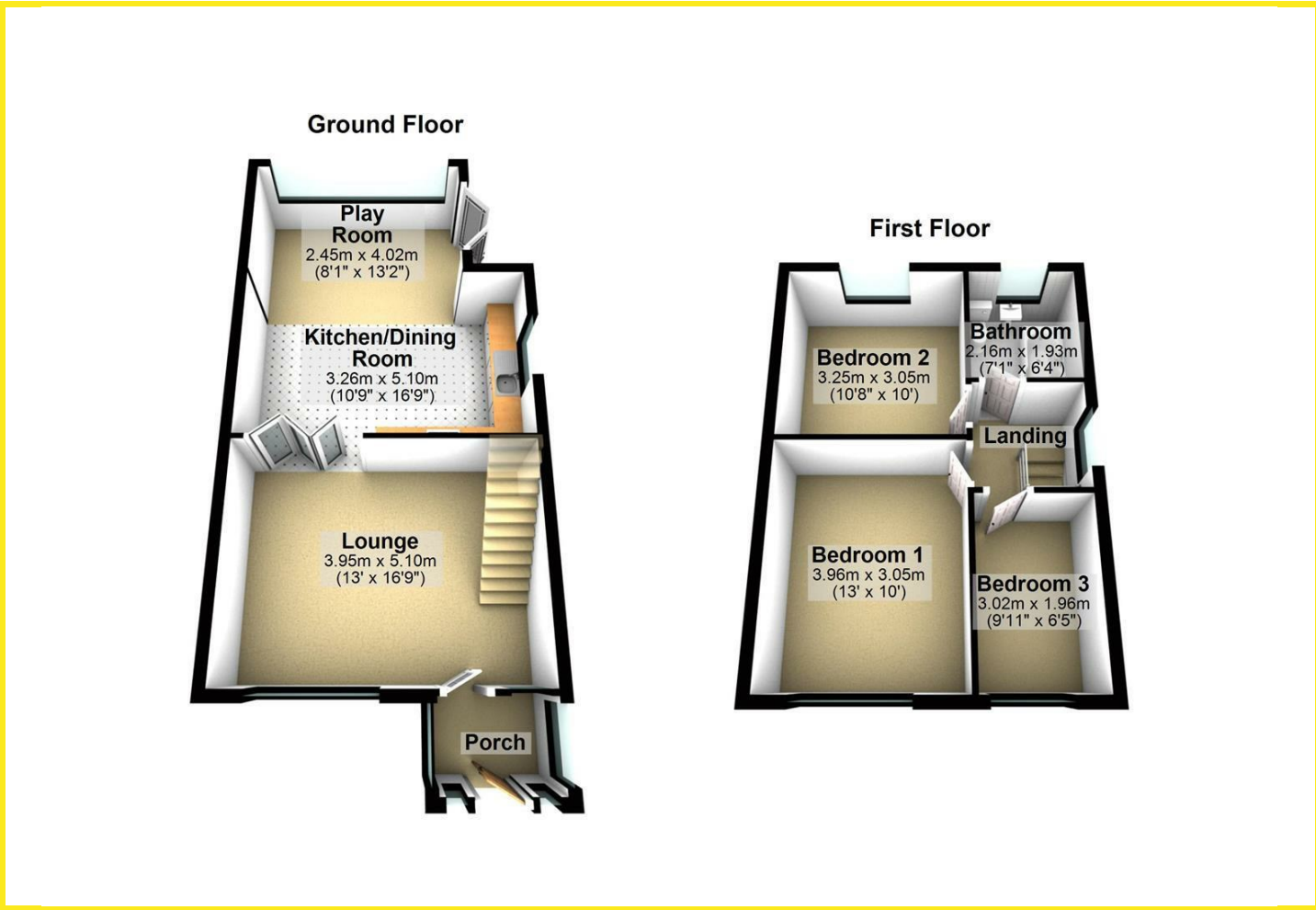




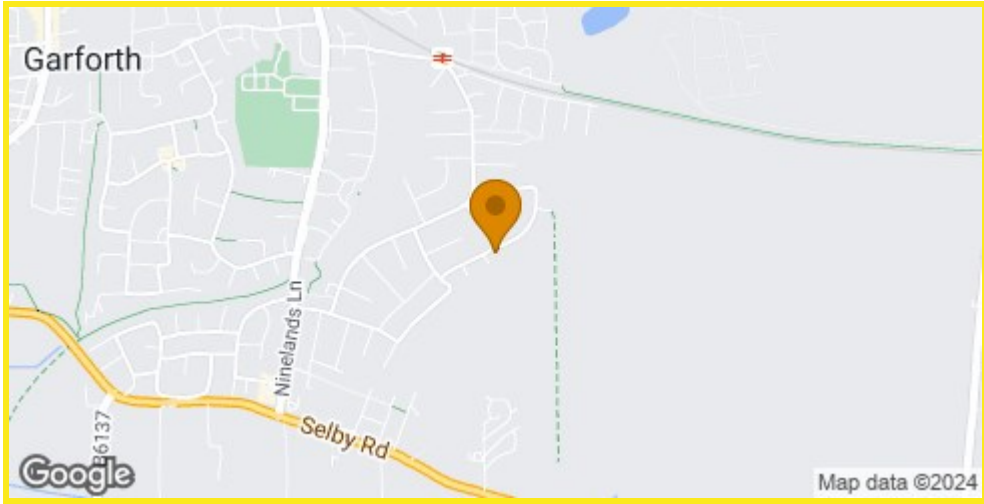




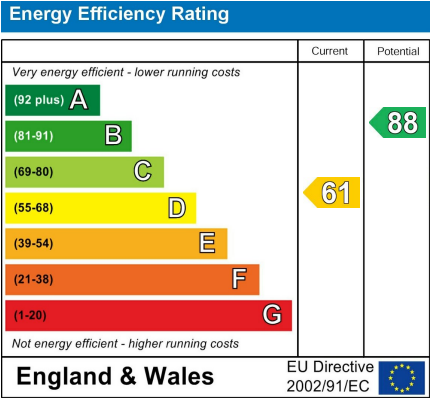
Floor Plan



Area Map



Energy Efficiency Graph



Directions

From the A63 Leeds/Selby Road turn into Garforth on Ninelands Lane by the Fire Station. Follow Ninelands Lane and take the first turning right on to Hazelwood Avenue, then first left on to Fairburn Drive. Take the third turning right off Fairburn Drive onto Kentmere Avenue and continue to the junction where the property can be found directly opposite on Severn Drive.

These particulars, whilst believed to be accurate are set out as a general outline only for guidance and do not constitute any part of an offer or contract. Intending purchasers should not rely on them as statements of representation of fact, but must satisfy themselves by inspection or otherwise as to their accuracy. No person in this firms employment has the authority to make or give any representation or warranty in respect of the property.